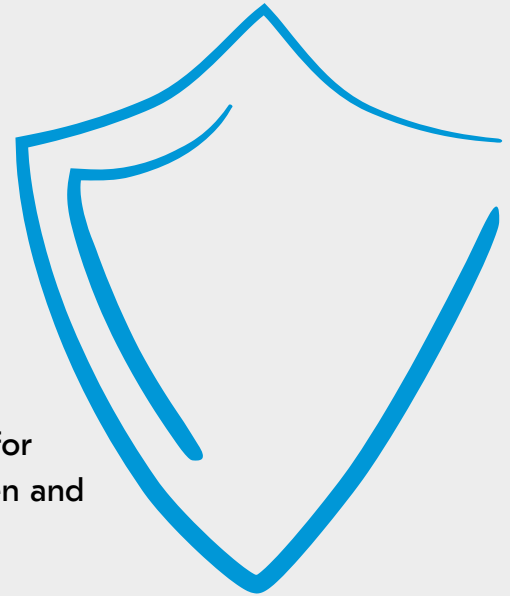


Smart, secure, and sustainable

Enjoy low running costs and high-quality prints with the ECOSYS PA2600cx/ECOSYS PA2600cwx. This is the ideal desktop printer for small companies and home workers. It has an intuitive touch screen and cutting-edge security features to optimise workflows.



ECOSYS PA2600cx/ PA2600cwx

Print speeds up to 26 ppm

**AirPrint, Mopria and
Kyocera Mobile Print capabilities**

**Direct printing from USB flash
memory devices**

Specifications

GENERAL

KYOCERA ECOSYS Laser Colour Printer

Operation panel: Colour 2.7 inch TFT

Type: Desktop

Engine speed:

Up to 26 A4 pages per minute simplex (single-sided),

Up to 13 A4 pages per minute duplex (both sides)

Resolution: 1200 x 1200 dpi

Recommended Print Volume:

Average 900 images per month

Maximum Print Volume: 65,000 pages per month

Maximum Life: 100,000 pages or 5 years

Warm-up time: Approx. 29 seconds or less

(after switching on)

Time to first print: Approx. 9.5/10.5 seconds or less

b/w/colour

CPU: ARM Cortex-A53 single core 1.0GHz

Memory: Standard 1 GB

Standard interfaces: USB 2.0 (Hi-Speed), Network

(10BASE-T/100BASE-TX/1000BASE-T), WLAN (802.11a/b/

g/n/ac, Wi-Fi Direct, 2.4/5 GHz)², USB host for USB flash

memory, IC Card Reader, slot for optional SD/SDHC card

Integrated accounting: 20 department codes

Dimensions (W x D x H):

Without packaging: 410 x 410 x 329 mm,

With packaging: 596 x 571 x 459mm

Weight: Without packaging:

Approx. 22 kg (with bundled toner)

Approx. 21 kg (without bundled toner)

With packaging: 28 kg

Power source: AC 220 ~ 240 V, 50/60 Hz

Power consumption:

Printing: 375 W

Ready mode: 33 W

Sleep-mode: 0.3 W

Noise (sound pressure level: ISO 7779/ISO 9296):

Printing: 49 dB(A)

Quiet mode: 44 dB (A)

Stand-by: 30 dB(A)

Safety standards: TÜV/GS, CE

This unit is manufactured according to ISO 9001 quality

standard and ISO 14001 environmental standard.

PAPER HANDLING

All paper capacities quoted are based on paper thickness of max. 0.11 mm. Please use paper recommended by KYOCERA under normal environmental conditions.

Input capacity: Multi-purpose tray: 50 sheets at 80 g/m², 60–220 g/m², A6, A5, A4, custom (70 × 148 – 216 × 356 mm), Standard universal paper cassette: 250 sheets at 80 g/m², 60–163 g/m², A6, A5, A4, custom (100 × 148 – 216 × 356 mm), Max. input capacity with options: 550 sheets at 80 g/m².

Duplex: Standard duplex unit, two-sided printing, 60–120 g/m², A5, A4, custom (140 × 210 – 216 × 356 mm).

Output capacity: Max. 150 sheets (face-down)

PRINT FUNCTIONS

Controller language: PRESCRIBE

Emulations: PCL 6 (5c, XL), KPDL3 (PostScript 3 compatible),

PDF Direct Print 1.7, 2.0, XPS/Open XPS Direct Print,

TIFF Direct Print

Operating systems: All current Windows operating systems, MAC OS X Version 10.9 or higher, Chrome OS, as well as other operating systems on request

Fonts/barcodes: 93 outline fonts (PCL6, KPDL3), 4 fonts (Calibri), 4 fonts (Cambria), 1 Bitmap font, 45 one-dimensional barcodes (e.g. EAN-8, EAN-13, EAN-128), as well as support for two-dimensional barcodes PDF417 under PRESCRIBE (PCL and other barcodes available as an option)

Print features: "Proof and hold"³, Job storage³, Quick copy³, Private print³, Data storage method with PIN code or password³, Internet printing IPP 1.0, E-mail printing, WSD Print, EcoPrint - toner save mode, AirPrint, Mopria, Microsoft Universal Print, Job batch output, Kyocera Image Refinement, Pull print, VPSX, IPP PIN Print, optional Kyocera Cloud Print and Scan, Secure Boot, Run-time Integrity Check, Allowlisting, TLS 1.3, IPsec, HTTPS, SNMPv3, S/MIME, encrypted PDF direct printing, Security Watermark, electronic PDF signature, IPP over TLS, WSD, local and network authentication, Windows authentication (NTLM v2, Kerberos), Restriction of the user group through user login administration, IP filtering, port number restriction, blocking of interfaces, Security Quick Setup, Administrator Authentication on Firmware Update, SIEM Support (SysLog), SCEP, OSCP/CRL, optional TPM (Trusted Platform Module)

Mobile printing support: KYOCERA Mobile

Print app for iOS and Android, AirPrint, Mopria,

Microsoft Universal Print, Wi-Fi Direct²

CONSUMABLES

Average continuous toner yield in accordance with ISO/IEC 19798

TK-5454K Toner Kit:

Microfine toner black for 4,100 pages A4

Capacity of starter toner is 1,500 pages A4

TK-5454C, TK-5454M, TK-5454Y Toner Kit:

Microfine toner cyan, magenta, yellow for 3,200 pages A4

Starter toner cyan, magenta, yellow toner yield 1,500 pages A4

OPTIONS

PF-5110 Paper feeder (max. 1 unit):

Max. 250 sheets at 80 g/m², 60 – 163 g/m²; A6, A5, A4, custom (105 mm × 148 mm – 216mm × 356mm)

SECURITY

UG-33: ThinPrint support

UG-51: TPM (Trusted Platform Module), additional protection of confidential data

USB IC Card Reader + Card Authentication Kit (B):

Support for various authentication keys available

WARRANTY

2 years return-to-base as standard.

WHAT'S IN THE BOX:

Main unit, starter toner for 1,500 pages Black, Cyan, Magenta, Yellow, Quick Guide, safety instructions, power supply cord.

¹ The device is not designed to achieve the specified volumes in continuous operation.

² Only ECOSYS PA2600cwx

³ Optional SD/SDHC memory card is required

ECOSYS stands for ECOlogy, ECONomy and SYStem printing. With their long-life components, ECOSYS devices are designed to maximise durability and minimise the total cost of ownership with regard to maintenance, administration and consumables. The cartridge-free system means that only the toner has to be replaced regularly. The modular design concept allows you to add workflowenhancing functions as required. Integrated system software provides long-term crossnetwork compatibility. KYOCERA's long-life components cost you and the environment less.



KYOCERA Document Solutions Partner

KYOCERA Document Solutions Australia

Ph: 13 59 62

www.kyoceradocumentsolutions.com.au

KYOCERA Document Solutions New Zealand

Ph: 0800 459 623

www.kyoceradocumentsolutions.co.nz



* KYOCERA Document Solutions does not warrant that any specifications mentioned will be error-free.

Specifications are subject to change without notice. Information is correct at time of going to press.

All other brand and product names may be registered trademarks or trademarks of their respective holders and are hereby acknowledged.