

Smarter Working Made Simple

The TASKalfa 3554ci series adapts to your challenges.



TASKalfa 3554ci Series



Introduction

In today's business world, it's work smarter or step aside.

Business environments are changing, and customers' habits are evolving. Rather than a survival-first approach, business leaders wishing to build sustainable success need to look at **future-proofing their organisation**.

Remote and hybrid working have taken centre stage and the importance of a robust and agile organisational framework has quickly become evident.

The solutions that served us well yesterday in terms of document solutions and data security have been exposed during a period of unprecedented disruption, mobility, and uncertainty.

That's why, at Kyocera, we have **risen to the challenge** and delivered the answers to today's conundrums such as productivity, security, and paper-less workspaces to name but a few.

Customers will continue to demand more - be it quality, quantity, cost-effectiveness, or a more personalised service. To deliver more, you need the best tools, tools that deliver the same professional quality day after day - tools that last the test of time.

Your needs as a business continue to change. There are more devices than ever connecting to your shared

databases. Remote working is here to stay, and employees must be given the tools to print, scan, and share documents quickly and securely regardless of where they work. **The volume of new, malicious cyberthreats skyrocketed in 2020 and a security rethink is needed across the board.**

At Kyocera, we have realised that the solutions that helped our customers grow their business in the past also needed to evolve.

We had to reflect and adapt.

We have reinvented and delivered.

We present to you two brand-new revamped A3 print devices: the **TASKalfa 2554ci** and **TASKalfa 3554ci**. Updates on the TASKalfa 2553ci and TASKalfa 3253ci, this new pairing combines reliability and professional quality to digitise your workflows and elevate productivity to new heights with enhanced security and so much more.

You asked. We answered.

Now let's get to work.

1. Redefining Usability

Be it phones or tablets, smart televisions or PCs, ease of use is now a non-negotiable. Why should your printer be any different? Why persist any longer with machines that add pains to already pressured days?

Every frustrating minute spent toggling through confusing icons while trying to print and scan a simple document is time lost. Time that could and should be dedicated to adding value to your business.

Equipped with a **10.1-inch resistive display**, the new series boasts an **intuitive and easy-to-use, full-colour touch panel**, while offering fast and simple access to a wide range of document management functions including HyPAS applications. Meanwhile, hardware keys are minimised, and users enjoy a seamless transition between the user interfaces while using the **tablet-like display**.

An upgrade on the hugely popular TASKalfa 3253ci, the new TASKalfa 3554ci combines a **simple, slick and fresh design with gesture-based operations**. With a clear emphasis on important information and easy to understand icons, users enjoy pain-free visits to the printer.

Less confusion means less errors when printing and scanning documents, and this has a direct, positive impact on employee productivity and user experience.



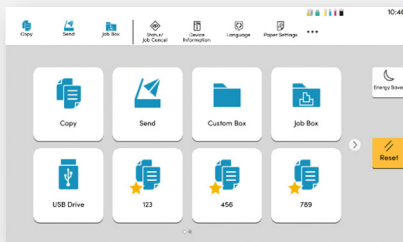
Why add needless complications to your workflows?

With the TASKalfa 3554ci you get a quick and easy fix to a problem that is holding companies back from growing to the next level.

Not only is it the smart choice but your team will thank you for it.

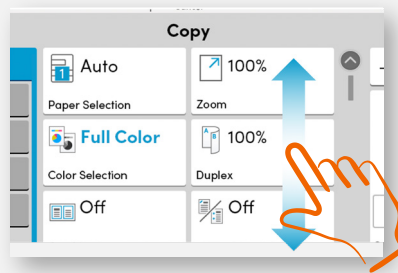
Meet the new interface

With standard colours and easy to understand icons, carrying out tasks at the printer has never been easier.



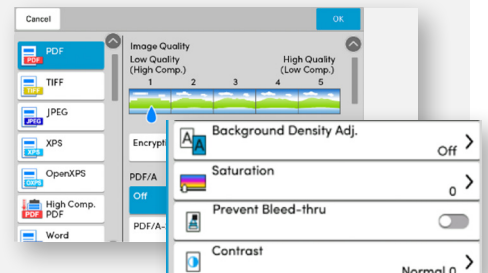
Simple

Standardised icons and graphics makes it easy to navigate the interface.



Intuitive

Emphasise important information and use gestures to select target items.



Efficient

Work quicker with less steps along with quick-switch settings.



2. Driving Your Productivity to New Heights

We all want to be more productive, right? It sounds straight forward in theory, but what about in practice?

With the TASKalfa 2554ci and TASKalfa 3554ci, Kyocera offers a **new and improved optional high-speed document processor (DP-7160 and DP-7170)**. Combine this with scan speeds of up to 200 images per minute and you have a highly productive MFP ready to transform the way your organisation works.

DP-7170



Kyocera's new series is an **A3 MFP industry pioneer in staple detection** and its ultrasonic multiple paper feed detection feature ensures that no scanned pages are missed during the digitisation of a paper document.

By expanding scan functionalities, we give you the solution to increase productivity when scanning multiple formats. Originals are protected and printer downtime – a major drain on organisational resources and productivity – is drastically reduced.

Furthermore, users always get the quality of scans they expect. Documents are easily adjusted via the automatic filtered correction features from both the Document Processor or platen. This feature ensures documents are digitised in the way you need it to be.

Scanning to folders continues to be a pain for many, but with Kyocera's new arrivals, the once complicated set up of **Scan to Folder function** has now been made easy on both the MFP and PC so that users can quickly and easily choose and create destination folders.

While predecessors allowed users to scan 998 sheets on both sides at once, the new TASKalfa devices have increased the maximum number of scan pages up to **4,999 single-sided and 5,000 double-sided** documents in a single file.

To drive your productivity, two key areas must be addressed: optimised printer performance and downtime.

The TASKalfa 3554ci series does both.

At Kyocera, we're not satisfied by delivering value through our products alone. Beyond the box, we have designed a whole host of value-adding software to perfectly compliment your fleet and help you grow your business one print at a time.

Two examples include:

- + **Kyocera Fleet Services** – Your provider uses real-time information to monitor your printing devices and can identify and address potential issues before they even arise. With KFS you regain control of your fleet while reducing both costs and costly downtime.
- + **Kyocera Net Manager** – A print management system designed to protect confidential data and manage your overall document output as well as reducing printing costs. The Print&Follow™ features enables documents to be securely printed from any device.

Transform the way you work



Prevention > Cure

Seamless scan to folder set up, easy tilted documents correction, and staple detection ensures your team can continue to work at full velocity.



Performance Upgrades

Compared to its predecessor, the TASKalfa 3554ci offers close to a 10% increase in print speeds (35 ppm) while paper capacity has been boosted by 18.5% to 320 sheets.



Enhanced Fault Isolation Function

When a failure occurs in the MFP, only functions related to the failure are disabled, meaning other functions can be used after restarting, thus reducing user downtime.



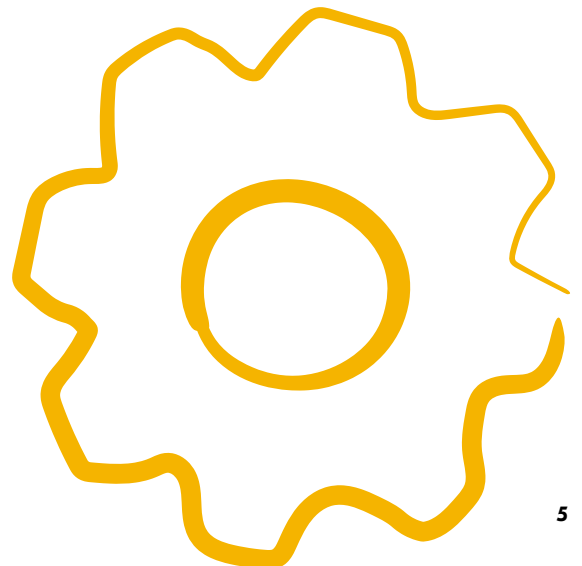
Multi Cropping

Quickly and efficiently scan multiple receipts or business cards to digitise the data at once. Users can subsequently save each document separately in the relevant folder.



Keypoint Intelligence – Buyers Lab (BLI) has already judged a wide variety of Kyocera multi-functional printing devices to be "Reliable" and "Highly Recommended," a globally-recognised seal of approval regarding the quality of our devices.

In the new age of working, you can't put a price on reliability, knowing that your devices will always work when you need them.





3. The New Standard of Security

Cyberthreats soar during periods of disruption. Today is no different.

The number of locations and devices connecting to shared databases and devices has increased drastically, while the transition to cloud-based servers continues to produce its own challenges.

Hackers are all too aware that an organisation's security is only as strong as its weakest link. All it takes is for one gap to emerge from the chaos that the transition to remote and hybrid working has presented.

After in-depth research, IDC's 2019–2020 Vendor Assessment report concludes that a majority of organisations place a notable difference on the level of importance associated with IT security compared with print and document security – they do so at their peril.

Are you happy to leave the fate of your valuable documents and data to chance? **With the TASKalfa 3554ci series, you don't have to run the risk.**

By focusing on the fundamental elements of security, we have delivered an A3 MFP that will prove itself as a vital cog within your overall security framework.

The following are just some of the standout security features of the TASKalfa 3554ci series:

Secure/Multipurpose Internet Mail Extensions (S/MIME)

With Secure/Multipurpose Internet Mail Extensions (S/MIME), users can encrypt and digitally sign emails. Emails are encrypted using the recipient's public key while the recipient needs to use a private key to read the message. If you digitally sign the message, the recipient will also know that the message is both authentic and unaltered. These steps not only reduce the risk of data breaches, but they also ensure you avoid possible sanctions and costly reputational damage.

Automatic update certification (SCEP)

This major improvement allows the MFP to retrieve certificates from the Certification Authority (CA) automatically.

This process has been simplified and now requires minimal effort and input from administrators. Once initiated, tasks run automatically, and all communication is carried out without administrator interaction. Moreover, automated retrieval of official certificates allows your IT department to focus on other important IT security matters, saving valuable time while significantly reducing IT costs.

Online Certificate Status Protocol/Certificate Revocation (OCSP/CRL)

Users can now verify the certification validity for encrypted communication by using OCSP/CRL settings. Furthermore, you enjoy greater protection in the event that a certificate has been revoked. Having to check certs is a time consuming and labour-intensive job – with OCSP/CRL this becomes a thing of the past because of the new devices' ability to carry out this check directly with certification authority. Such automated checks free up your IT team to focus on more pressing matters.

Security Information and Event Management (SIEM)

SIEM is the security log management function that enables a central point of information monitoring. Specialised software can allow you to visualise how the device is operated, while enabling you to detect unauthorised activities. The audit log records user-specific data relating to print jobs and devices before transmitting this data to the outside server. This allows you to easily manage security event logs from the server side.

By using real-time data, Machine Learning and Artificial Intelligence enables devices to flag suspicious or unusual behaviour while notifying the administrator.

Support TLS version 1.3

With Transport Layer Security (TLS) version 1.3, the TASKalfa 2554ci and TASKalfa 3554ci give users the most up-to-date encryption protocol in the industry for optimal communication security.

With version 1.3, digital signatures are required even if a previous-known configuration is used, while new digital signature algorithms ensure your data receives the best protection. The usage of a session hash has been introduced and extra support has been added for sending multiple OCSP responses.

Kyocera has been accredited with ISO 27001 certification, recognising its commitment to the highest standards of information security management across the business.



Transform the way you work

The new TASKalfa devices have been designed in accordance with our overarching philosophy towards security so that your devices and data get the protection they deserve:



Confidentiality

Information assets handled by the MFP must not be leaked to a third party.



Integrity

Information assets must not be altered. They must be accurate and correct.



Availability

Information assets must be immediately accessible while maintaining confidentiality and integrity.



Authenticity

The accuracy of the author or the owner of the information assets can be validated.



Accountability

The history of user and manager operations and the MFP behaviour can be tracked.



Non-repudiation

Prevent repudiation of operations that have not been performed by MFP users and managers.



Reliability

The behaviour and output of the MFP is correct and as expected.



4. Artificial Intelligence

Artificial intelligence (AI) has brought improvements to many aspects of our lives and has already added a new dimension to the information management industry.

Frustrating printer downtime continues to be the Achilles heel of many organisations across all industries.

Therefore, the potential for devices to self-diagnose, predict behaviours, and address potential issues before they happen is invaluable. AI helps free up precious resources such as time, manpower, and finances, thus allowing you to deliver greater value to your customers.

Besides increased uptime, AI gives businesses the platform and means to work smarter and become more efficient.

With Kyocera's new line of A3 devices, AI functions have been integrated to improve performance while enabling new capabilities to be added throughout its lifecycle so that you enjoy the best possible MFP devices at all times.

And if that wasn't enough, customers can enjoy continuous AI features updates when available to ensure consistently great performance.

Here's how Kyocera has used AI to elevate your printing to a whole new level:

Enhanced user experience and improved productivity

When scanning, you can now emphasise the handwritten part of the document without changing the format or image. This is a particularly useful function for proofreading documents, questionnaires, documents, drawings, etc. where thin lines and small characters are common. It's also possible to overwrite handwritten characters and lines on the document, using a white filler to make them invisible.

Superior image quality

With the new AI functionalities, there's no need to invest extra time and effort to improve low resolution images. The KX printer driver supports the 'Super Resolution' function that compares images with information in an internal image library, identifying and converting low-resolution images to professional quality. Not only do you get fantastic quality, you also spend less time making manual changes.

It's time to make an impact with your output!

In a nutshell, artificial intelligence is fundamentally changing how we work. Automation takes away the heavy lifting and reduces the time we dedicate to manual, repetitive tasks.

It allows us to work smarter and more efficiently so that we can concentrate on creating new value streams for our customers.

With Kyocera, you get the best of both worlds: top-class hardware working together with the latest AI for real business gains.





5. Environment

At Kyocera, we are committed to doing the right thing as a human being. We work hand in hand with our customers and partners so that they get the solutions they need while we collectively reduce our overall carbon footprint.

The new TASKalfa 3554ci series marks another important step in this strategy.

Equipped with ARM A53 (Quad Core) 1.6GHz CPU's to improve overall performance, the new series has seen a significant Typical Energy Consumption (TEC) value reduction for the TASKalfa 2554ci compared to its predecessor, while the TASKalfa 3554ci has maintained the same Energy Star 3.0 value while increasing machine speed to 35 ppm.

Energy consumption during sleep mode has been significantly reduced from 0.7W to 0.5W for both devices. Not only does this help boost your eco-credentials, you also save on your energy bills!

Kyocera has received ISO 14001:2015 certification, recognition of the importance placed on sustainability across all levels of the organisation.



6. It's Time to Rise Up

To drive your business forward, you need solutions that work for you.

Solutions that can be moulded to your needs so you can continue delivering even greater value to your customers and partners.

With our new TASKalfa 3554ci series, you get a device that's:



Reliable.

Improved print speeds combined with staple detection and ultrasonic multiple paper feed detection features ensure minimal downtime and maximum productivity. It's not just us who think our machines are built to last: Buyers Lab (BLI) recognition is a testament to their durability.



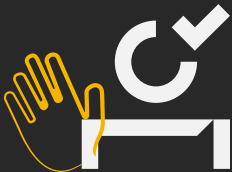
Intelligent.

Kyocera's intelligent technology gives you the power to produce professional images without the hassle. Meanwhile, software such as Kyocera Fleet Services helps maximise the uptime of your fleet.



Secure.

We've added a host of security enhancements to the TASKalfa 3554ci series which addresses areas such as security log management, certification validity, and email encryption. Your valuable data deserves the best protection.



Easy to use.

With the new series you get a tablet-like display that combines a simple, slick and fresh design with gesture-based operations for an unbeatable user experience. No more stress. No more frustration.

An investment that saves you time and money in the long run and allows your team to be great is not an expense.

It is a sure-fire way to future-proof your business.

Greater productivity and rock-solid security. Increased uptime and professional output print after print.

The benefits are there for those prepared to take the next step.

This period of disruption has presented you with a golden opportunity to transform your business.

Now it's time to tool up and seize the moment.



TASKalfa 2554ci



A3 Colour Multifunctional

25/25 ppm for A4 (Colour/Mono)

4,800 x 1,200 dpi resolution

Your Intuitive, Reliable and All-Round office partner

Designed to operate in dynamic work environments and ensure consistent productivity. The TASKalfa 2554ci is one of the most reliable products in the field featuring cutting edge security and intelligent features that will help your business focus on what matters. The 10.1" touchscreen with our newly designed simple and intuitive user interface will make operating this as easy as possible.

Specifications

GENERAL

KYOCERA TASKalfa Laser Colour Multifunctional, HyPAS™ solution platform
Operation panel: 256.5 mm (10.1 inch) full-colour touch panel display, speaker for job notification, 15° - 90° swivel mounted
Engine speed: Up to 25/12 pages A4/A3 per minute, Duplex print/copy speed: 24 pages A4 per minute
Resolution: 4800dpi equivalent x 1200dpi (print) 600 x 600dpi (scan/copy)
Warm-up time: 18 seconds or less
Time to first print: 7/9.2 seconds or less in Mono/Colour
Time to first copy: 7.4/9.8 seconds or less in Mono/Colour (DP), approx. 6.4/8.5 or less in Mono/Colour (Platen)
CPU: ARM A53 (Quad Core) 1.6GHz
Memory: Standard 4GB, 32GB SSD, Optional 320GB or 1TB
Standard interfaces: USB 3.0 (Super-Speed USB), 4 x USB Host Interface, Gigabit Ethernet (10BaseT/100BaseTX/1000BaseT, IPv6, IPv4, IPsec, 802.3az support), optional Wi-Fi (IEEE 802.11a/b/g/n/ac), 2 eUIO slots for optional internal print server or for optional fax system, slot for optional Wireless LAN, Slot for optional SD Card, NFC tag
Dimensions (W x D x H): 602mm x 665mm x 790 mm
Weight: Approx. 90 kg
Power source: AC 220-240 V, 50/60 Hz
Power consumption: Print Mode: 450W; Copy Mode: 450W; Ready Mode: 40W; Sleep Mode: 0.5W
Noise (surface sound pressure level: ISO 7779 measurement distance of 1 meter)
 Copying/Printing Mode in Colour: 49.0 dB(A) L_{PA}
 Stand-by: 35dB(A)
Safety standards: TÜV/GS, CE. This unit is manufactured according to ISO 9001 quality standard and ISO 14001 environmental standard.

PAPER HANDLING

All paper capacities quoted are based on paper thickness of max. 0.11mm. Please use paper recommended by Kyocera under normal environmental conditions.
Input capacity: Multi-purpose tray: 150 sheets, 52-300 g/m², (Banner 136-163g/m²), A6R - SRA3 (320 x 450 mm), Banner max. 304.8 x 1,220 mm, Standard universal paper cassette: 2 x 500 sheet 52 - 300g/m², Upper cassette: A6R up to A4R, lower cassette A6R up to SRA3, Max. input capacity with options: 7,150 sheets A4
Duplex: Standard supports 60-256 g/m², SRA3 to A6R
Output capacity: Standard 500 sheets face down, max. 5,000 sheets

PRINT FUNCTIONS

Controller language: PRESCRIBE
Emulations: PCL6 (PCL5c/PCL-XL), KPDL3 (PostScript 3 compatible), PDF Direct Print, XPS Direct Print and OpenXPS
Operating systems: All current Windows operating systems, MAC OS X Version 10.9 or higher, Unix, Linux, as well as other operating systems on request
Fonts/barcodes: 93 outline fonts (PCL), 136 fonts (KPDL 3), 4 fonts (Calibri), 4 fonts (Cambria), 1 Bitmap font, 45 types of

one-dimensional barcodes, 1 type of two-dimensional barcode (PDF417)

Print features: Encrypted PDF 2.0 Direct Print, IPP printing, e-mail printing, WSD print, secure printing via SSL, IPsec, SNMPv3, quick copy, proof and hold, private print, job storage and job management functionality, Super Resolution
Mobile printing support: AirPrint, Mopria, NFC, Direct Wi-Fi (optional), MyPanel and KYOCERA Mobile Print app for iOS and Android

COPY FUNCTIONS

Max. original size: A3/Ledger
Continuous copying: 1-9,999
Zoom range: 25-400% in 1% steps
Preset magnification ratios: 5 Reductions/5 Enlargements
Exposure mode: Manual: 17 steps
Image adjustments: Text + Photo, Photo, Text, Diagram/Map
Features: Scan-once-copy-many, electronic sort, 2in1, 4in1, image repeat, page numbering, cover mode, booklet copy, interrupt copy, form overlay, margin shift, auto cassette change, skip blank page, ID copy, Handwriting erase and highlight

SCAN FUNCTIONS

Functionality: Scan-to-email, Scan-to-FTP, Scan-to-SMB 3.0, Scan-to-USB Host, Scan-to-box, Network TWAIN, WSD scan (WIA Driver Network)
Scan speed: 200 ipm (300 dpi, A4, duplex, with DP-7160/7170)
Scan resolution: 600, 400, 300, 200 dpi, 256 greyscales per colour
Max. scan size: A3, Ledger
Original recognition: Text, photo, text + photo, Light Text / Fine Line, optimised for OCR
File types: TIFF, PDF, PDF/A, JPEG, Open XPS, Encrypted PDF, High compression PDF, PDF/A-1a/b, PDF/A-2a/b/u, Searchable PDF (option), MS Office file (option)

FAX FUNCTIONS (OPTIONAL)

Compatibility: ITU-T Super G3
Modem speed: Max. 33.6kbps
Transmission time: Less than 3 seconds (IBIG)
Scanning speed: 2.0 seconds or less
Maximum original size: A3/Ledger, Banner: 1,600mm
Compression method: IBIG, MMR, MR, MH
Features: Network faxing, rotate transmission, rotate reception, encrypted transmission and reception, duplex fax reception, memory reception, mailbox, remote diagnostics, polling transmission and reception, broadcast, Optional Internet-fax, dual fax with second fax system 12

CONSUMABLES

Average continuous toner yield in accordance with 5% coverage A4
TK-8369K Toner Kit: Microfine toner black for 25,000 pages A4
TK-8369C, TK-8369M, TK-8369Y Toner Kits: Microfine toner cyan, magenta, yellow for 12,000 pages A4
Staples: SH-10, 5000 x 3 staples, for BF-730, DF-7100, DF-7120
 SH-12, 5000 x 3 staples, for DF-7140
WT-8500: Waste Toner Bottle: 40,000 sheets (in accordance with 5% coverage, b/w : colour = 7:3)

OPTIONS

Fax System 12
Internet Fax Kit (A) AC
Scan Extension Kit (A) AC: Scan to searchable PDF solution (embedded OCR), convert to PDF or MS Office (docx, xlsx, pptx)
DP-7140: (Reversing), 50 sheets, 45-160 g/m² (simplex), 50-120 g/m² (duplex), A5R-A3, Banner up to 1,900 mm
DP-7150: (Reversing), 140 sheets, 35-160 g/m² (simplex), 50-120 g/m² (duplex), A6R-A3, Banner up to 1,900 mm
DP-7160: (one-path duplex scanning), 320 sheets at 50 - 80 g/m², 35-220 g/m² (simplex), 50-220 g/m² (duplex), A6R-A3, Banner up to 1,900 mm
DP-7170: (one-path duplex scanning with ultrasonic sensor), 320 sheets at 50 - 80 g/m², 35-220 g/m² (simplex), 50-220 g/m² (duplex), A6R-A3, Banner up to 1,900mm
DT-730(B): Document tray
PF-7120: Side Deck: 3,000 sheets, A4, 60-300 g/m²
PF-7140: 2 x 500 sheets, 52-300 g/m², A6R-SRA3
PF-7150: 2 x 1,500 sheets, A4, 52-300 g/m², A4, B5, Letter
DF-7100: Inner finisher 500 sheets A4, 52-300 g/m², A6R-SRA3
 Stapling up to 50 sheets A4 or 30 sheets A3 at 3 positions
DF-7120: 1,000 sheets A4, 52-300 g/m², A6R-SRA3, Stapling up to 50 sheets A4 or 30 sheets A3 at 3 positions
DF-7140: Main tray: 4,000 sheets A4, Sub tray: 200 sheets A4, 52-300 g/m², A6R-SRA3, Stapling up to 65 sheets A4 or 30 sheets A3 at 3 positions
PH-710: Punch unit for DF-7120 and DF-7140
 2-hole/4-hole/, 45-300 g/m², A5R-A3
MT-730(B): Mailbox sorter for DF-7140
 7 bins x 100 sheets A4, 50 sheets A3/B4, 60-163 g/m²
BF-730: Booklet and tri-folding unit for DF-7140, Half-folding: 52-256 g/m², A3, B4, A4R, Booklet: Max. 20 sheets (64 pages, 60-90 g/m²), Non-staple folding: Max. 5 sheets (60-90 g/m²)
 Tri-folding: Tri folding: Max 5 sheets (60-120 g/m², A4R), Multi tri-folding: 5 sheets (60-90 g/m²), 3 sheets, (91-120 g/m²)
JS-7100: 100-sheet internal job separator, 52-300 g/m², A6R-SRA3
JS-7110: 250-sheet Inner shift tray, 52-300 g/m², A6R-SRA3
PH-7120: Inner punch unit for inner finisher DF-7100
HD-15: HDD 320 GB
HD-16: HDD 1 TB
NK-7120: NK-7120 Numeric keypad
UG-33 AC: ThinPrint support
UG-34 AC: Emulation (IBM Proprinter/EPSON LQ-850/LinePrinter)
USB IC Card Reader + Card Authentication Kit (B) AC
IB-37: Wireless Network Interface (USB : 5GHz/2.4GHz)
IB-50: GB-Ethernet board 10 BaseT/100 BaseTX/1,000 BaseT
IB-51: Wireless LAN Interface (802.11b/g/n)
Platen cover Type (E)
1290/30: Low cabinet for two tray configuration

TASKalfa 3554ci



A3 Colour Multifunctional

35/35 ppm for A4 (Colour/Mono)

4,800 x 1,200 dpi resolution

Versatility, Intelligence and Reliability at their best

The TASKalfa 3554ci is the ideal partner for an ever changing business environment featuring reliable performance with reduced maintenance requirements and latest security. Your team can stay focused on their own tasks while this MFP delivers the results they are counting on. The 10.1" touchscreen with our newly designed simple and intuitive user interface will make operating this device as easy as possible.

Specifications

GENERAL

KYOCERA TASKalfa Laser Colour Multifunctional, HyPAS™ solution platform
Operation panel: 256.5 mm (10.1 inch) full-colour touch panel display, speaker for job notification, 15° - 90° swivel mounted
Engine speed: Up to 35/17 pages A4/A3 per minute, Duplex print/copy speed: 35 pages A4 per minute
Resolution: 4800dpi equivalent x 1200dpi (print), 600 x 600 dpi (scan/copy)
Warm-up time: 18 seconds or less
Time to first print: 5.9/7.7 seconds or less in Mono/Colour
Time to first copy: 6.3/8.5 seconds or less in Mono/Colour (DP), Approx. 5.3/ 7.0 seconds or less in Mono/Colour (Platen)
CPU: ARM A53 (Quad Core) 1.6GHz
Memory: Standard 4GB, 32GB SSD, optional 320GB or 1TB
Standard interfaces: USB 3.0 (Super-Speed USB), 4 x USB Host Interface, Gigabit Ethernet (10BaseT/100BaseTX/1000BaseT, IPv6, IPv4, IPsec, 802.3az support), optional Wi-Fi (IEEE 802.11a/b/g/n/ac), 2 eUIO slots for optional internal print server or for optional fax system, slot for optional Wireless LAN, Slot for optional SD Card, NFC tag
Dimensions (W x D x H): 602 mm x 665 mm x 790 mm
Weight: Approx. 90 kg
Power source: AC 220–240 V, 50/60 Hz
Power consumption: Print Mode: 590W; Copy Mode: 590W; Ready Mode: 40W; Sleep Mode: 0.5W
Noise (surface sound pressure level: ISO 7779 measurement distance of 1 meter)
Copying/Printing: 49.0 dB(A) in colour
Stand-by mode: 35 dB(A)
Safety standards: TÜV/GS, CE. This unit is manufactured according to ISO 9001 quality standard and ISO 14001 environmental standard.

PAPER HANDLING

All paper capacities quoted are based on paper thickness of max. 0.11 mm. Please use paper recommended by Kyocera under normal environmental conditions.
Input capacity: Multi-purpose 150 sheets, 52 - 300g/m², (Banner 136–163 g/m²), A6R - SRA3 (320 x 450 mm), Banner max. 304.8 x 1,220 mm, Standard universal paper cassette: 2 x 500 sheet, 52 - 300g/m², Upper cassette: A6R up to A4R, lower cassette A6R up to SRA3, Max. input capacity with options: 7,150 sheets A4
Duplex: Standard 60 to 256 g/m², SRA3 to A6R
Output capacity: Standard 500 sheets face down, max. 5,000 sheets

PRINT FUNCTIONS

Controller language: PRESCRIBE
Emulations: PCL6 (PCL5c / PCL-XL), KPD3 (PostScript 3 compatible), PDF Direct Print, XPS Direct Print and OpenXPS
Operating systems: All current Windows operating systems MAC OS X Version 10.9 or higher Unix, Linux, as well as other operating systems on request
Fonts/barcodes: 93 outline fonts (PCL), 136 fonts (KPD3), 4 fonts (Calibri), 4 fonts (Cambria), 1 Bitmap font, 45 types of one-dimensional barcodes, 1 type of two-dimensional barcode

(PDF417)

Print features: Encrypted PDF 2.0 Direct Print, IPP printing, e-mail printing, WSD print, secure printing via SSL, IPsec, SNMPv3, quick copy, proof and hold, private print, job storage and job management functionality, Super Resolution
Mobile printing support: AirPrint, Mopria, NFC, Direct Wi-Fi (optional), MyPanel and KYOCERA, Mobile Print app for iOS and Android

COPY FUNCTIONS

Max. original size: A3/Ledger
Continuous copying: 1 – 9,999
Zoom range: 25 – 400% in 1% steps
Pre-set magnification ratios: 5 Reductions/5 Enlargements
Exposure mode: Manual: 17 steps
Image adjustments: Text + Photo, Photo, Text, Diagram/Map
Features: Scan-once-copy-many, electronic sort, 2in1, 4in1, image repeat, page numbering, cover mode, booklet copy, interrupt copy, form overlay, margin shift, auto cassette change, skip blank page, ID copy, Handwriting erase and highlight

SCAN FUNCTIONS

Functionality: Scan-to-email, Scan-to-FTP, Scan-to-SMB 3.0, Scan-to-USB Host, Scan-to-box, Network TWAIN, WSD scan (WIA Driver Network)
Scan speed: 200 ipm (300 dpi, A4, duplex, with DP-7160/7170)
Scan resolution: 600, 400, 300, 200 dpi, 256 greyscales per colour
Max. scan size: A3, Ledger
Original recognition: Text, photo, text + photo, Light Text / Fine Line, optimised for OCR
File types: TIFF, PDF, PDF/A, JPEG, Open XPS, Encrypted PDF, High compression PDF, PDF/A-1a/b, PDF/A-2a/b/u, Searchable PDF (option), MS Office file (option)

FAX FUNCTIONS (OPTIONAL)

Compatibility: ITU-T Super G3
Modem speed: Max. 33.6kbps
Transmission time: Less than 3 seconds (IBIG)
Scanning speed: 2.0 seconds or less
Maximum original size: A3/Ledger, Banner: 1600mm
Compression method: IBIG, MMR, MR, MH
Features: Network faxing, rotate transmission, rotate reception, encrypted transmission and reception, duplex fax reception, memory reception, mailbox, remote diagnostics, polling transmission and reception, broadcast, Optional Internet-fax, dual fax with second fax system 12

CONSUMABLES

Average continuous toner yield in accordance with 5% coverage A4.
TK-8379K Toner Kit: Microfine toner black for 30,000 pages A4
TK-8379C, TK-8379M, TK-8379Y Toner Kits: Microfine toner cyan, magenta, yellow for 20,000 pages A4
Staples: SH-10, 5000 x 3 staples, for BF-730, DF-7100, DF-7120 SH-12, 5000 x 3 staples, for DF-7140
WT-8500: Waste Toner Bottle: 40,000 sheets (in accordance with 5% coverage, b/w : colour = 7:3)

OPTIONS

Fax System 12
Internet Fax Kit (A) AC
Scan Extension Kit (A) AC: Scan to searchable PDF solution (embedded OCR), convert to PDF or MS Office (docx, xlsx, pptx) (m2) (duplex), A5R–A3, Banner up to 1,900 mm
DP-7140: (Reversing), 50 sheets, 45–160 g/m² (simplex), 50–120 g/m² (duplex), A5R–A3, Banner up to 1,900 mm
DP-7150: (Reversing), 140 sheets, 35–160 g/m² (simplex), 50–120 g/m² (duplex), A6R–A3, Banner up to 1,900 mm
DP-7160: (one-path duplex scanning), 320 sheets at 50 - 80 g/m², 35–220 g/m² (simplex), 50–220 g/m² (duplex), A6R–A3, Banner up to 1,900 mm
DP-7170: (one-path duplex scanning with ultrasonic sensor), 320 sheets at 50 - 80 g/m², 35–220 g/m² (simplex), 50–220 g/m² (duplex), A6R–A3, Banner up to 1,900mm
DT-730(B): Document tray
PF-7120: Side Deck: 3,000 sheets, A4, 60–300 g/m²
PF-7140: 2 x 500 sheets, 52–300 g/m², A6R–SRA3
PF-7150: 2 x 1,500 sheets, A4, 52–300 g/m², A4, B5, Letter
DF-7100: Inner finisher 500 sheets A4, 52–300 g/m², A6R–SRA3
Stapling up to 50 sheets A4 or 30 sheets A3 at 3 positions
DF-7120: 1,000 sheets A4, 52–300 g/m², A6R–SRA3, Stapling up to 50 sheets A4 or 30 sheets A3 at 3 positions
DF-7140: Main tray: 4,000 sheets A4, Sub tray: 200 sheets A4, 52–300 g/m², A6R–SRA3, Stapling up to 65 sheets A4 or 30 sheets A3 at 3 positions
PH-7C: Punch unit for DF-7120 and DF-7140
2-hole/4-hole, 45–300 g/m², A5R–A3
MT-730(B): Mailbox sorter for DF-7140
7 bins x 100 sheets A4, 50 sheets A3/B4, 60–163 g/m²
BF-730: Booklet and tri-folding unit for DF-7140, Half-folding: 52–256 g/m², A3, B4, A4R, Booklet: Max. 20 sheets (64 pages, 60–90 g/m²), Non-staple folding: Max. 5 sheets (60–90 g/m²)
Tri-folding: Tri folding: Max 5 sheets (60–120 g/m², A4R), Multi tri-folding: 5 sheets (60–90 g/m²), 3 sheets, (91–120 g/m²)
JS-7100: 100-sheet internal job separator, 52–300 g/m², A6R – SRA3
JS-7110: 250-sheet Inner shift tray, 52–300 g/m², A6R – SRA3
PH-7120: Inner punch unit for inner finisher DF-7100
PH-7130: Inner punch unit for inner finisher DF-7100, Swedish type
HD-15: HDD 320 GB
HD-16: HDD 1 TB
NK-7120: NK-7120 Numeric keypad
UG-33 AC: ThinPrint support
UG-34 AC: Emulation (IBM Proprinter/EPSON LQ-850/LinePrinter)
USB IC Card Reader + Card Authentication Kit (B) AC
IB-37: Wireless Network Interface (USB : 5GHz/2.4GHz)
IB-50: GB-Ethernet board 10 BaseT/100 BaseTX/1,000 BaseT
IB-51: Wireless LAN interface (802.11b/g/n)
Platen cover Type (E)
1290/30: Low cabinet to suit two-tray configuration

Kyocera Document Solutions has championed innovative technology since 1934. We enable our customers to turn information into knowledge, excel at learning and surpass others. With professional expertise and a culture of empathetic partnership, we help organisations put knowledge to work to drive change.

Kyocera Document Solutions Australia
Ph: 13 59 62
www.kyoceradocumentsolutions.com.au

Kyocera Document Solutions New Zealand
Ph: 0800 459 623
www.kyoceradocumentsolutions.co.nz



kyoceradocumentsolutions.com.au